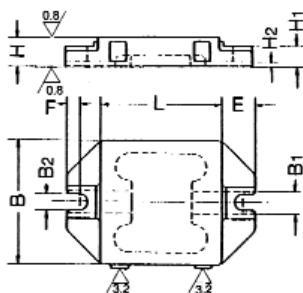


GENOMA

Serie 900

Grundplatte

Base Plate



Material:

Grauguss GG25

Material:

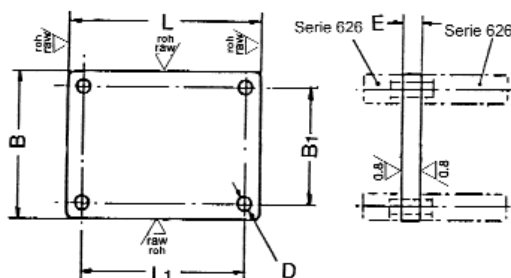
Cast Iron BS 1452 Gr 250

B	L	B1	B2	E	F	H	H1	H2	kg	Bestell-Nr./Order-No.
160	160	30	18	40	20	40	25	6	6	900-401
200	315	30	18	40	20	40	25	6	15	900-403
250	315	30	18	40	20	40	25	6	19,5	900-405

Serie 903

Vorrichtungplatte aus Grauguss

Jig Plate



Material:

Grauguss GG25

Material:

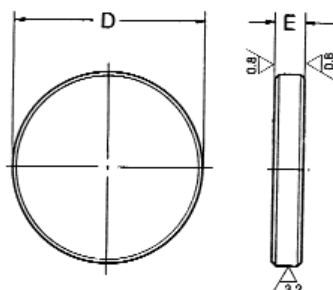
Cast Iron BS 1452 Gr 250

B	L	B1	DH7	E	L1	kg	Bestell-Nr./Order-No.
135	170	105	10	16	140	2,6	903-405
170	170	140	10	16	140	3,3	903-406
170	210	135	12	20	175	5,1	903-407
170	260	135	12	20	225	6,3	903-408
210	260	175	12	20	225	7,8	903-410

Serie 904

Rundplatte aus Grauguss

Cats Iron Circular Plate



Material:

Grauguss GG25

Material:

Cast Iron BS 1452 Gr 250

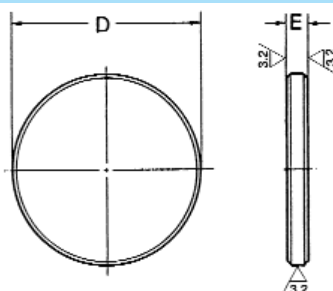
D	E	kg	Bestell-Nr./Order-No.	D	E	kg	Bestell-Nr./Order-No.
100	20	1,1	904-403	315	45	25	904-410
125	25	2,3	904-404	400	45	41	904-412
150	25	3,2	904-445	500	50	71	904-4145
160	32	4,6	904-405	630	50	112	904-4165
200	32	7,2	904-406	800	56	203	904-418
200	63	14	904-407	1000	63	356	904-419
250	36	13	904-4085				

GENOMA

Serie 905

Rundplatte aus Stahl

Steel Circular Plate



Material:

Stahl

Material:

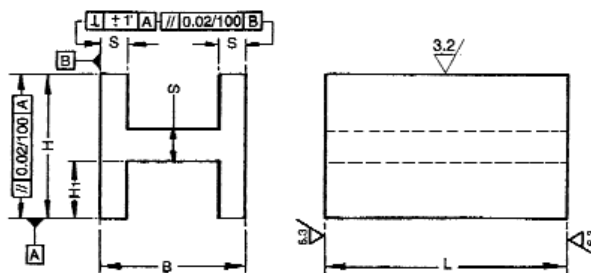
Steel BS EN 10025

D	E	kg	Bestell-Nr./Oder-No.	D	E	kg	Bestell-Nr./Oder-No.
125	12	1,2	905-403	200	20	4,9	905-408
125	16	1,5	905-404	250	25	9,6	905-410
160	16	2,5	905-405	315	22	13,5	905-411
160	20	3,1	905-406	315	28	17	905-412
200	16	3,9	905-407	400	25	25	905-413

Serie 907

H - Profil

H - Section



Material: Grauguss 25
Planparallelität <0,02/100 mm
Winkligkeit < ± 1'

Lieferbare Längen wahlweise zwischen Lmin und Lmax
Beispiel: 907-401x500

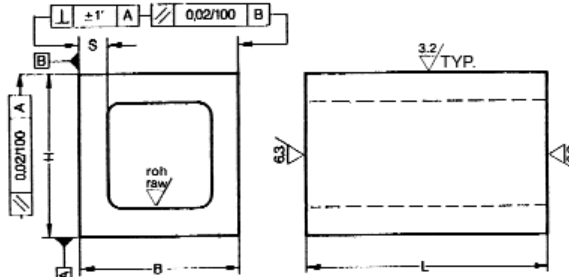
Material: Cast Iron
BS 1452 GR 250
Parallelism <0,02/100 mm
Squareness < ± 1'
Cuttings available between Lmin and Lmax
Example: 907-401x500

B	H	H1	S	L min	L max	Bestell-Nr./Order-No.
80	80	32	16	100	600	907-401
100	100	40	20	100	600	907-402
125	125	52,5	20	100	600	907-403
160	160	67,5	25	100	600	907-404
200	200	84	32	100	600	907-405

Serie 908

Hohlkörper quadratisch

Square Hollow Block



Material: Grauguss 25
Planparallelität <0,02/100 mm
Winkligkeit < ± 1'

Lieferbare Längen wahlweise zwischen Lmin und Lmax
Beispiel: 908-402x400

Material: Cast Iron
BS 1452 GR 250
Parallelism <0,02/100 mm
Squareness < ± 1'
Cuttings available between Lmin and Lmax
Example: 908-402x400

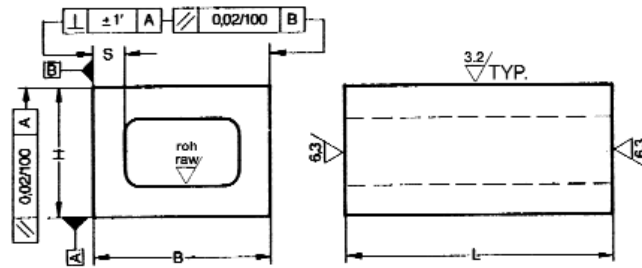
B	H	S	L min	L max	Bestell-Nr./Order-No.
63	63	12	100	300	908-401
80	80	14	100	500	908-402
100	100	16	100	600	908-403
125	125	18	100	600	908-404
160	160	20	100	600	908-405
200	200	25	100	600	908-406
250	250	28	100	600	908-407
315	315	32	200	600	908-408

GENOMA

Serie 909

Hohlkörper Rechteckig

Rectangular Hollow Block



Material: Grauguss 25
Planparallelität <0,02/100 mm
Winkligkeit < ± 1'

Lieferbare Längen wahlweise zwischen Lmin und Lmax
Beispiel: 909-402x500

Material: Cast Iron
BS 1452 GR 250
Parallelism <0,02/100 mm
Squareness < ± 1'

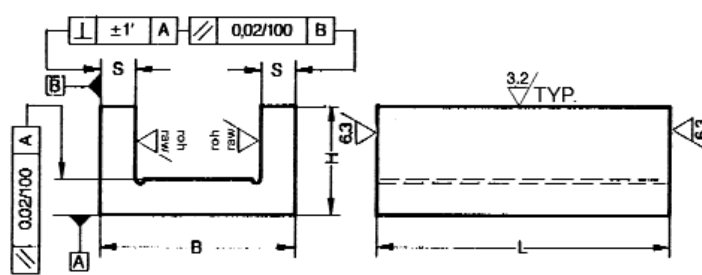
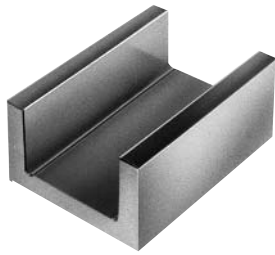
Cuttings available between Lmin and Lmax
Example: 909-402x500

B	H	S	L min	L max	Bestell-Nr./Order-No.
80	63	14	100	300	909-401
100	80	16	100	600	909-402
125	80	14	100	600	909-4025
160	100	18	100	600	909-403
200	160	20	100	600	909-404
250	200	25	100	600	909-405
315	250	30	100	600	909-406

Serie 910

U - Profil

Channel Section



Material: Grauguss 25
Planparallelität <0,02/100 mm
Winkligkeit < ± 1'

Lieferbare Längen wahlweise zwischen Lmin und Lmax
Beispiel: 910-402x300

Material: Cast Iron
BS 1452 GR 250
Parallelism <0,02/100 mm
Squareness < ± 1'

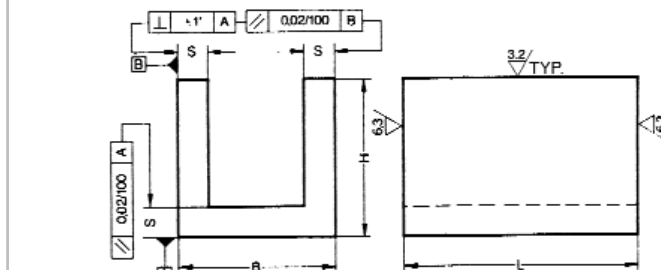
Cuttings available between Lmin and Lmax
Example: 910-402x300

B	H	S	L min	L max	Bestell-Nr./Order-No.
80	45	12	100	500	910-401
100	63	16	100	500	910-402
125	80	16	100	500	910-403
160	90	20	200	500	910-404
200	90	22	200	500	910-405
250	100	25	200	500	910-406

Serie 911

U - Profil

U - Section



Material: Grauguss 25
Planparallelität <0,02/100 mm
Winkligkeit < ± 1'

Lieferbare Längen wahlweise zwischen Lmin und Lmax
Beispiel: 911-402x450

Material: Cast Iron
BS 1452 GR 250
Parallelism <0,02/100 mm
Squareness < ± 1'

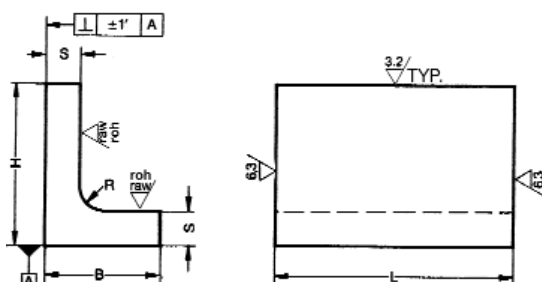
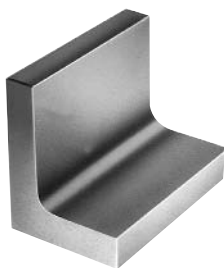
Cuttings available between Lmin and Lmax
Example: 911-402x450

B	H	S	L min	L max	Bestell-Nr./Order-No.
50	50	12	100	500	911-401
63	63	14	100	600	911-402
80	80	16	100	600	911-403
100	100	20	100	800	911-404
125	125	22	100	800	911-405
150	150	25	100	800	911-4055
160	160	25	100	800	911-406
200	200	32	100	800	911-407
250	250	36	100	800	911-408
315	250	36	100	800	911-4085

Serie 912

L - Profil ungleichschenkelig

Heavy Duty L - Section



Material: Grauguss 25
Planparallelität <0,02/100 mm
Winkligkeit < ± 1°

Lieferbare Längen wahlweise zwischen Lmin und Lmax

Beispiel: 912-402x300

Material: Cast Iron
BS 1452 GR 250
Parallelism <0,02/100 mm
Squareness < ± 1°

Cuttings available between Lmin and Lmax

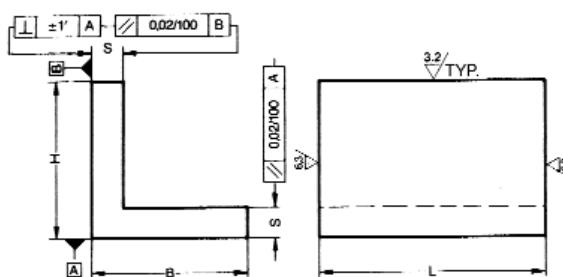
Example: 912-402x300

B	H	S	R	L min	L max	Bestell-Nr./Order-No.
50	63	20	12	100	600	912-401
63	80	20	14	100	600	912-402
80	100	22	16	100	600	912-4025
100	125	25	18	100	600	912-403
125	160	28	20	100	600	912-4035
160	200	32	22	100	600	912-404
200	250	40	25	100	600	912-405
250	315	40	28	100	600	912-406

Serie 913

L - Profil gleichschenkelig

L - Section



Material: Grauguss 25
Planparallelität <0,02/100 mm
Winkligkeit < ± 1°

Lieferbare Längen wahlweise zwischen Lmin und Lmax

Beispiel: 913-402x300

Material: Cast Iron
BS 1452 GR 250
Parallelism <0,02/100 mm
Squareness < ± 1°

Cuttings available between Lmin and Lmax

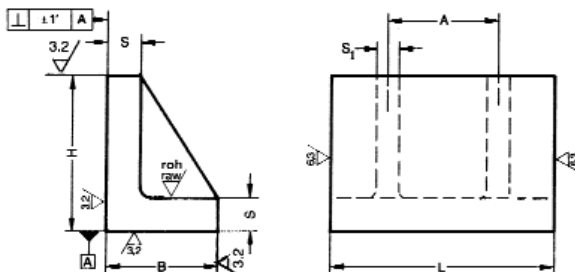
Example: 913-402x300

B	H	S	L min	L max	Bestell-Nr./Order-No.
50	50	12	100	600	913-401
63	63	14	100	600	913-402
80	80	16	100	600	913-403
100	100	20	100	800	913-404
125	125	22	100	800	913-405
150	150	25	100	800	913-4055
160	160	25	100	800	913-406
200	200	32	100	800	913-407
250	250	36	100	800	913-408
315	315	38	100	800	913-409

Serie 914

L - Profil mit Verstärkungsrippen

Webbed L - Section



Material: Grauguss 25

Winkligkeit < ± 1°

Material: Cast Iron
BS 1452 GR 250

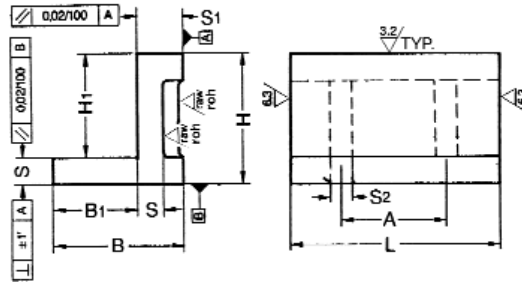
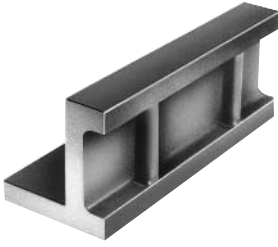
Squareness < ± 1°

B	H	S	S1	A	L	kg	Bestell-Nr./Order-No.
80	100	20	16	-	150	3,7	914-401x150
80	100	20	16	150	300	7,5	914-401x300
100	125	22	18	-	150	5,3	914-402x150
100	125	22	18	150	300	11	914-402x300
125	160	25	20	-	150	8	914-403x150
125	160	25	20	150	300	16	914-403x300
160	200	32	22	-	150	13	914-404x150
160	200	32	22	150	300	26	914-404x300
200	250	36	25	-	200	25	914-405x200
200	250	36	25	200	400	49	914-405x400
250	315	40	28	-	250	44	914-406x250
250	315	40	28	250	500	87	914-406x500

Serie 916

T - Profil mit Verstärkungsrippen

Webbed T - Section



Material: Grauguss 25

Winkligkeit $< \pm 1'$

Material: Cast Iron
BS 1452 GR 250

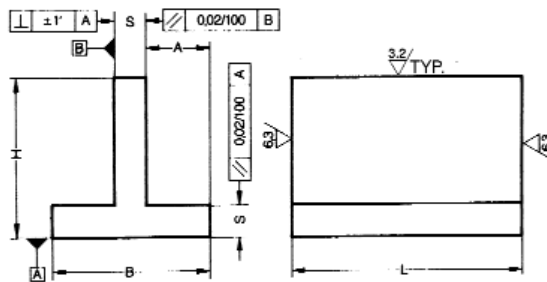
Squareness $< \pm 1'$

B	B1	H	H1	S	S1	S2	A	L	kg	Bestell-Nr./Order-No.
100	63	100	80	20	37	12	-	150	4,4	916-401x150
100	63	100	80	20	37	12	150	300	8,7	916-401x300
125	80	122	100	22	45	16	-	150	6,1	916-402x150
125	80	122	100	22	45	16	150	300	12	916-402x300
160	100	150	125	25	60	18	-	150	9,1	916-403x150
160	100	150	125	25	60	18	150	300	18	916-403x300
200	125	188	160	28	75	22	-	150	13	916-404x150
200	125	188	160	28	75	22	150	300	26	916-404x300
250	160	232	200	32	90	25	-	200	25	916-405x200
250	160	232	200	32	90	25	200	400	50	916-405x400

Serie 917

T - Profil gleichschenklig

Equal T - Section



Material: Grauguss 25
Planparallelität $< 0,02/100$ mm
Winkligkeit $< \pm 1'$

Lieferbare Längen wahlweise
zwischen L_{min} und L_{max}
Beispiel: 917-402x300

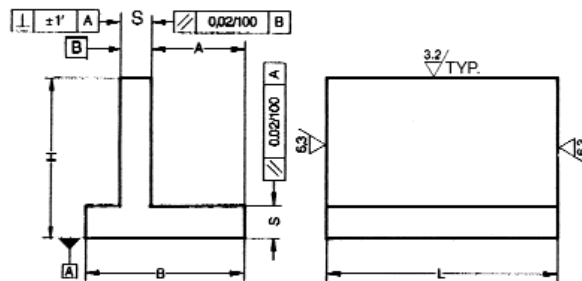
Material: Cast Iron
BS 1452 GR 250
Parallelism $< 0,02/100$ mm
Squareness $< \pm 1'$
Cuttings available between
 L_{min} and L_{max}
Example: 917-402x300

B	H	S	A	L min	L max	Bestell-Nr./Order-No.
50	50	12	19	100	300	917-401
63	63	14	24,5	100	600	917-402
80	80	16	32	100	800	917-403
100	100	20	40	100	800	917-404
125	125	22	51,5	100	800	917-405
160	160	25	67,5	100	800	917-406
200	200	32	84	100	800	917-407

Serie 919

T - Profil asymmetrisch

Unequal T - Section

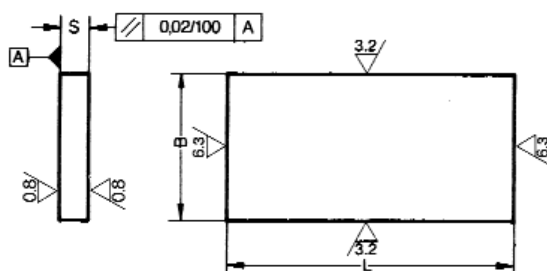
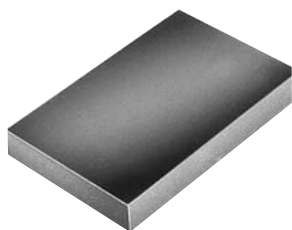


Material: Grauguss 25
Planparallelität $< 0,02/100$ mm
Winkligkeit $< \pm 1'$

Lieferbare Längen wahlweise
zwischen L_{min} und L_{max}
Beispiel: 919-402x300

Material: Cast Iron
BS 1452 GR 250
Parallelism $< 0,02/100$ mm
Squareness $< \pm 1'$
Cuttings available between
 L_{min} and L_{max}
Example: 919-402x300

B	H	S	A	L min	L max	Bestell-Nr./Order-No.
100	100	20	63	100	600	919-401
125	125	22	80	100	600	919-402
160	160	25	100	100	600	919-403
200	200	32	125	100	600	919-404



Material: Grauguss 25
Planparallelität <0,02/100 mm
Winkligkeit < ± 1°

*Lieferbare Längen wahlweise
zwischen Lmin und Lmax*

Beispiel: 920-402x200

Material: Cast Iron
BS 1452 GR 250
Parallelism <0,02/100 mm
Squareness < ± 1°

*Cuttings available between
Lmin and Lmax*

Example: 920-402x200

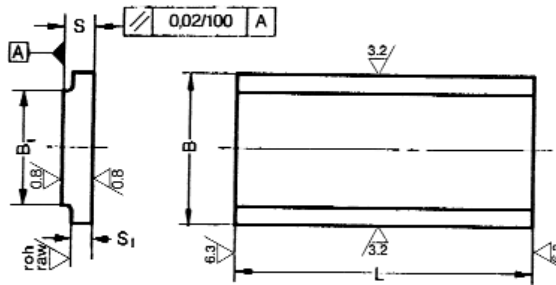
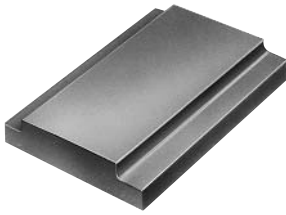
B	S	L min	L max	Bestell-Nr./Order-No.	B	S	L min	L max	Bestell-Nr./Order-No.
Platten / Plates					Blöcke / Blocks				
63	12	100	300	920-401	25	16	100	300	920-451
80	12	100	300	920-402	32	20	100	300	920-452
100	12	100	300	920-403	40	25	100	300	920-453
125	12	100	300	920-404	50	32	100	600	920-454
160	12	100	300	920-405	40	40	100	600	920-455
200	12	100	300	920-406	63	40	100	800	920-457
63	16	100	300	920-409	50	50	100	800	920-459
80	16	100	300	920-410	80	50	100	800	920-461
100	16	100	300	920-411	63	63	100	800	920-463
125	16	100	300	920-412	100	63	100	1000	920-465
160	16	100	300	920-413	80	80	100	1000	920-467
200	16	100	300	920-414	125	80	100	1000	920-468
80	20	100	300	920-415	160	80	100	1000	920-4685
100	20	100	600	920-416	80	100	100	1000	920-469
125	20	100	600	920-417	100	100	100	1000	920-470
160	20	100	600	920-418					
200	20	100	600	920-419					
250	20	100	600	920-420					
125	25	100	600	920-423					
160	25	100	600	920-424					
200	25	100	600	920-425					
250	25	100	600	920-426					
315	25	100	800	920-427					
160	32	100	800	920-429					
200	32	100	800	920-430					
250	32	100	800	920-431					
315	32	100	800	920-432					
400	32	100	800	920-433					
200	40	100	1000	920-435					
250	40	100	1000	920-436					
315	40	100	1000	920-437					
400	40	100	1000	920-438					
250	50	100	1000	920-440					
500	50	100	1000	920-443					

GENOMA

Serie 921

Auflageplatte

Bolster Plate



Material: Grauguss 25
Planparallelität <0,02/100 mm
Lieferbare Längen wahlweise
zwischen Lmin und Lmax
Beispiel: 921-402x400

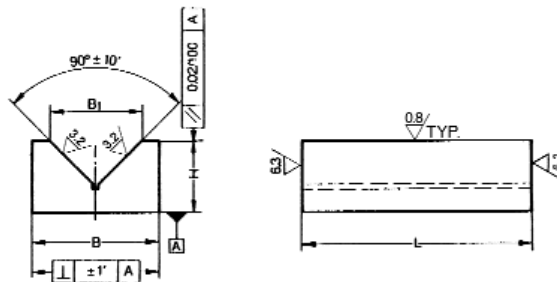
Material: Cast Iron
BS 1452 GR 250
Parallelism <0,02/100 mm
Cuttings available between
Lmin and Lmax
Example: 921-402x400

B	B1	S	S1	L min	L max	Bestell-Nr./Order-No.
140	100	25	16	100	600	921-402
200	160	32	16	100	1000	921-404
290	250	32	16	100	1000	921-406

Serie 922

Prismenblock

V - Block



Material: Grauguss 25
Planparallelität <0,02/100 mm
Winkligkeit < ± 1°
Lieferbare Längen wahlweise
zwischen Lmin und Lmax
Beispiel: 922-4012x200

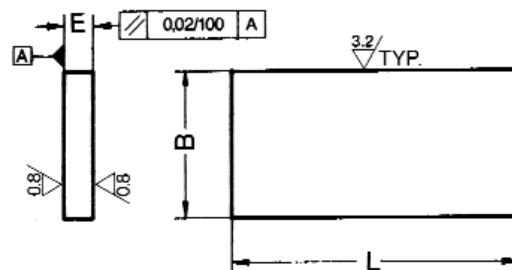
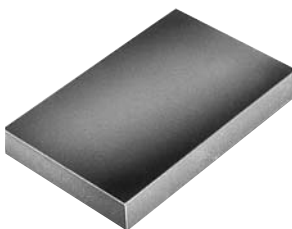
Material: Cast Iron
BS 1452 GR 250
Parallelism <0,02/100 mm
Squareness < ± 1°
Cuttings available between
Lmin and Lmax
Example: 922-4012x200

B	B1	H	L min	L max	Bestell-Nr./Order-No.
50	32	36	100	500	922-4012
100	32	36	100	500	922-4015
80	50	50	100	500	922-4032
125	50	55	100	500	922-4035
100	80	70	100	500	922-4052
125	100	80	100	500	922-406

Serie 930

Stahlplatte rechteckig

Steel Rectangular Plate



Material:
Stahl

Planparallelität <0,02/100 mm

Material:
Steel BS EN 10025

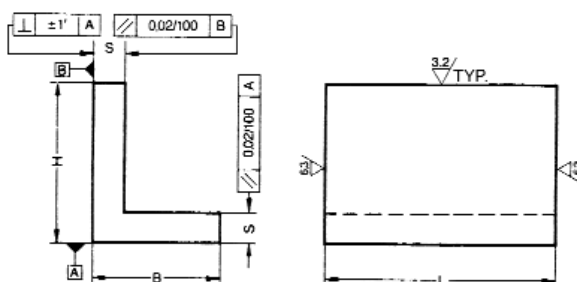
Parallelism <0,02/100 mm

B	L	E	kg	Bestell-Nr./Order-No.	B	L	E	kg	Bestell-Nr./Order-No.
100	150	20	2,3	930-402	300	300	32	23	930-409
150	200	25	5,9	930-403	300	400	32	30	930-410
200	200	25	7,8	930-404	400	400	32	40	930-411
150	250	25	7,3	930-405	400	450	40	56	930-412
200	250	25	9,8	930-406	500	500	50	98	930-414
250	250	25	12	930-407	550	550	50	118	930-415
250	300	32	19	930-408					

Serie 935

L - Profil ungleichschenlig

Unequal L - Section



Material: Grauguss 25
Planparallelität <0,02/100 mm
Winkligkeit < ± 1'

Lieferbare Längen wahlweise
zwischen Lmin und Lmax

Beispiel: 935-402x450

Material: Cast Iron
BS 1452 GR 250
Parallelism <0,02/100 mm
Squareness < ± 1'

Cuttings available between
Lmin and Lmax

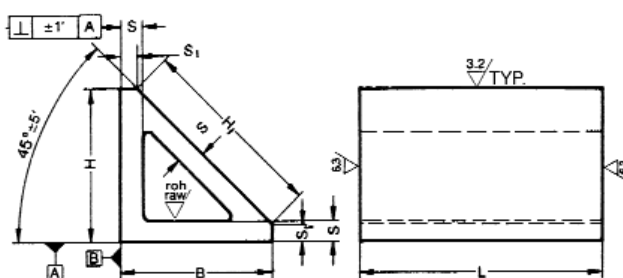
Example: 935-402x450

B	H	S	L min	L max	Bestell-Nr./Order-No.
40	50	12	100	500	935-401
50	63	14	100	600	935-402
63	80	16	100	600	935-403
80	100	20	100	800	935-404
100	125	22	100	800	935-405
125	160	25	100	800	935-406
160	200	32	100	800	935-407
200	250	36	100	800	935-408
250	315	38	100	800	935-409

Serie 936

Winkelprofil 45°

Angular Hollow Block 45°



Material:
Grauguss 25

Winkligkeit < ± 1'

Material:
Cast Iron BS 1452 GR 250

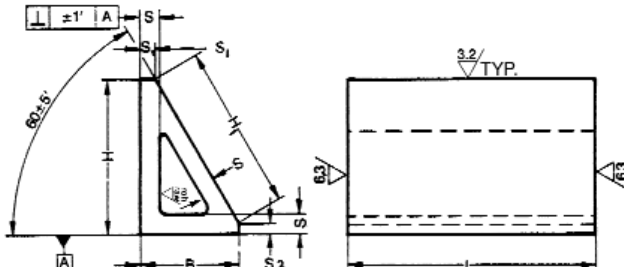
Squareness < ± 1'

B	H	H1	S	S1	L	kg	Bestell-Nr./Order-No.
100	100	127	14	10	150	4,5	936-401x150
100	100	127	14	10	300	8,8	936-401x300
200	200	255	22	20	150	15	936-404x150
200	200	255	22	20	300	29	936-404x300

Serie 937

Winkelprofil 30°

Angular Hollow Block 30°



Material:
Grauguss 25

Winkligkeit < ± 1'

Material:
Cast Iron BS 1452 GR 250

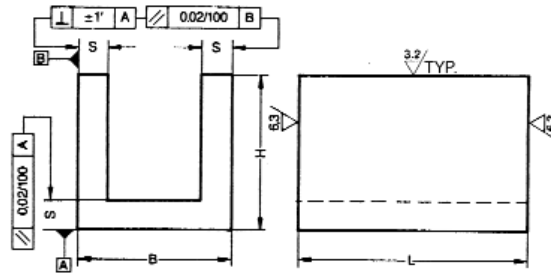
Squareness < ± 1

B	H	H1	S	S1	S2	L	kg	Bestell-Nr./Order-No.
63	100	108	12	9	6	150	3	937-401x150
63	100	108	12	9	6	300	6	937-401x300
125	200	222	20	14	8	150	9,5	937-404x150
125	200	222	20	14	8	600	19	937-404x300

Serie 943

U - Profil Aluminium

Aluminium U - Section



Material:

Hochfeste LM-Legierung F51
ALZnMgCu 1,5 Mat.-Nr. 3.4365
Zugfestigkeit 510 N/mm²
Planparallelität <0,02/100mm
Winkligkeit < ± 1'

Material:

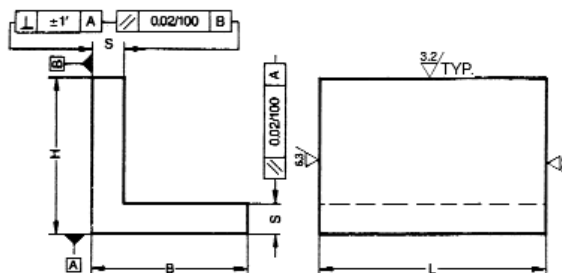
Aluminium high tensile F51
ALZnMgCu 1,5 Mat.-Nr. 3.4365
tensile strength 510 N/mm²
Parallelism <0,02/100 mm
Squareness < ± 1'

B	H	S	L	kg	Bestell-Nr./Order-No.
80	80	16	100	0,9	943-401x100
80	80	16	200	1,7	943-401x200
80	80	16	300	2,6	943-401x300
80	80	16	400	3,6	943-401x400
80	80	16	500	4,5	943-401x500
80	80	16	600	5,4	943-401x600
100	100	20	100	1,1	943-402x100
100	100	20	200	2,8	943-402x200
100	100	20	300	4,2	943-402x300
100	100	20	400	5,6	943-402x400
100	100	20	500	7	943-402x500
100	100	20	600	8,4	943-402x600
125	125	20	100	1,7	943-403x100
125	125	20	200	3,6	943-403x200
125	125	20	300	5,4	943-403x300
125	125	20	400	7,2	943-403x400
125	125	20	500	9	943-403x500
125	125	20	600	11	943-403x600
200	200	32	100	4,6	943-404x100
200	200	32	200	9,3	943-404x200
200	200	32	300	14	943-404x300
200	200	32	400	19	943-404x400
200	200	32	500	23	943-404x500
200	200	32	600	28	943-404x600

Serie 944

L - Profil gleichschenkelig Aluminium

Aluminium L - Section



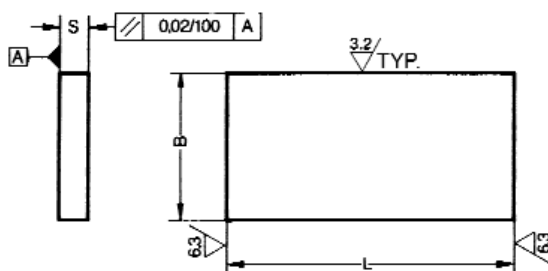
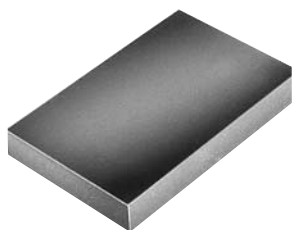
Material:

Hochfeste LM-Legierung F51
ALZnMgCu 1,5 Mat.-Nr. 3.4365
Zugfestigkeit 510 N/mm²
Planparallelität <0,02/100mm
Winkligkeit < ± 1'

Material:

Aluminium high tensile F51
ALZnMgCu 1,5 Mat.-Nr. 3.4365
tensile strength 510 N/mm²
Parallelism <0,02/100 mm
Squareness < ± 1'

B	H	S	L	kg	Bestell-Nr./Order-No.	B	H	S	L	kg	Bestell-Nr./Order-No.
80	80	16	100	0,6	944-401x100	160	160	25	100	1,8	944-4035X100
80	80	16	200	1,2	944-401x200	160	160	25	200	3,6	944-4035X200
80	80	16	300	1,9	944-401x300	160	160	25	300	5,6	944-4035X300
80	80	16	400	2,5	944-401x400	160	160	25	600	10,8	944-4035X600
80	80	16	500	3,1	944-401x500	200	200	32	100	3,2	944-404x100
80	80	16	600	3,7	944-401x600	200	200	32	200	6,4	944-404x200
100	100	20	100	1	944-402x100	200	200	32	300	9,5	944-404x300
100	100	20	200	1,9	944-402x200	200	200	32	400	13	944-404x400
100	100	20	300	2,9	944-402x300	200	200	32	500	16	944-404x500
100	100	20	400	3,9	944-402x400	200	200	32	600	19	944-404x600
100	100	20	500	4,9	944-402x500						
100	100	20	600	5,8	944-402x600						
125	125	20	100	1,4	944-403x100						
125	125	20	200	2,7	944-403x200						
125	125	20	300	4,1	944-403x300						
125	125	20	400	5,4	944-403x400						
125	125	20	500	6,8	944-403x500						
125	125	20	600	8,1	944-403x600						



Material:
Hochfeste LM-Legierung F51
ALZnMgCu 1,5 Mat.-Nr. 3.4365
Zugfestigkeit 510 N/mm²
Planparallelität <0,02/100mm
Winkligkeit < ± 1'

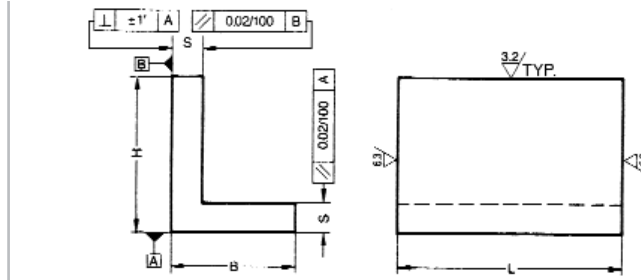
Material:
Aluminium high tensile F51
ALZnMgCu 1,5 Mat.-Nr. 3.4365
tensile strength 510 N/mm²
Parallelism <0,02/100 mm
Squareness < ± 1

S	B	L	Bestell-Nr./Order-No.	S	B	L	Bestell-Nr./Order-No.
10	40	150	945-10040X150	25	250	600	945-25250X600
10	40	300	945-10040X300	25	315	100	945-25315X100
12	50	150	945-12050X150	25	315	200	945-25315X200
12	50	300	945-12050X300	25	315	300	945-25315X300
16	25	300	945-16025X300	25	315	600	945-25315X600
16	63	150	945-16063X150	32	50	300	945-32050X300
16	63	300	945-16063X300	32	50	600	945-32050X600
20	32	300	945-20032X300	32	160	100	945-32160X100
20	80	100	945-20080X100	32	160	150	945-32160X150
20	80	150	945-20080X150	32	160	200	945-32160X200
20	80	200	945-20080X200	32	160	300	945-32160X300
20	80	300	945-20080X300	32	160	600	945-32160X600
20	80	600	945-20080X600	32	250	200	945-32250X200
20	100	100	945-20100X100	32	250	300	945-32250X300
20	100	150	945-20100X150	32	250	600	945-32250X600
20	100	200	945-20100X200	32	315	200	945-32315X200
20	100	300	945-20100X300	32	315	300	945-32315X300
20	100	600	945-20100X600	32	315	600	945-32315X600
20	160	100	945-20160X100	32	400	200	945-32400X200
20	160	150	945-20160X150	32	400	300	945-32400X300
20	160	200	945-20160X200	32	400	600	945-32400X600
20	160	300	945-20160X300	40	63	300	945-40063X300
20	160	600	945-20160X600	40	63	600	945-40063X600
20	200	100	945-20200X100	40	200	100	945-40200X100
20	200	150	945-20200X150	40	200	150	945-40200X150
20	200	200	945-20200X200	40	200	200	945-40200X200
20	200	300	945-20200X300	40	200	300	945-40200X300
20	200	600	945-20200X600	40	200	600	945-40200X600
20	250	100	945-20250X100	40	250	200	945-40250X200
20	250	150	945-20250X150	40	250	300	945-40250X300
20	250	200	945-20250X200	40	250	600	945-40250X600
20	250	300	945-20250X300	40	315	300	945-40315X300
20	250	600	945-20250X600	40	315	600	945-40315X600
25	125	100	945-25125X100	40	400	150	945-40400X150
25	125	150	945-25125X150	40	400	300	945-40400X300
25	125	200	945-25125X200	40	400	600	945-40400X600
25	125	300	945-25125X300	50	80	300	945-50080X300
25	125	600	945-25125X600	50	80	600	945-50080X600
25	200	100	945-25200X100	50	315	200	945-50315X200
25	200	150	945-25200X150	50	315	300	945-50315X300
25	200	200	945-25200X200	50	315	600	945-50315X600
25	200	300	945-25200X300	50	500	300	945-50500X300
25	200	600	945-25200X600	50	500	600	945-50500X600
25	250	100	945-25250X100	63	100	300	945-63100X300
25	250	150	945-25250X150	63	100	600	945-63100X600
25	250	200	945-25250X200	80	125	300	945-80125X300
25	250	300	945-25250X300	80	125	600	945-80125X600

Serie 946

L - Profil ungleichschenklig Aluminium

Unequal Aluminium L-Section



Material:
Hochfeste LM-Legierung F51
ALZnMgCu 1,5 Mat.-Nr. 3.4365
Zugfestigkeit 510 N/mm²
Planparallelität <0,02/100mm
Winkligkeit $< \pm 1^\circ$

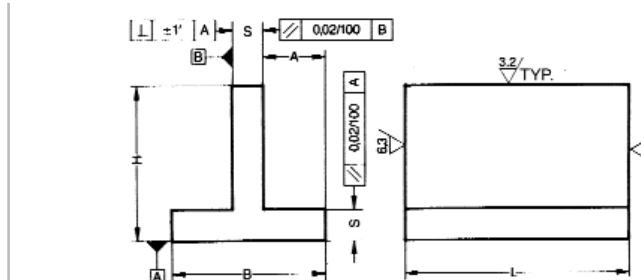
Material:
Aluminium high tensile F51
ALZnMgCu 1,5 Mat.-Nr. 3.4365
tensile strength 510 N/mm²
Parallelism <0,02/100 mm
Squareness $< \pm 1$

S	B	H	L	Bestell-Nr./Order-No.	S	B	H	L	Bestell-Nr./Order-No.
12	32	50	150	946-101X150	20	100	125	315	946-105X315
12	32	50	315	946-101X315	20	100	125	600	946-105X600
12	40	63	150	946-102X150	25	125	160	100	946-106X100
12	40	63	315	946-102X315	25	125	160	150	946-106X150
12	40	63	600	946-102X600	25	125	160	200	946-106X200
16	63	80	100	946-103X100	25	125	160	315	946-106X315
16	63	80	150	946-103X150	25	125	160	600	946-106X600
16	63	80	200	946-103X200	32	160	200	100	946-107X100
16	63	80	315	946-103X315	32	160	200	150	946-107X150
16	63	80	600	946-103X600	32	160	200	200	946-107X200
20	80	100	100	946-104X100	32	160	200	315	946-107X315
20	80	100	150	946-104X150	32	160	200	600	946-107X600
20	80	100	200	946-104X200	36	200	250	200	946-108X200
20	80	100	315	946-104X315	36	200	250	315	946-108X315
20	80	100	600	946-104X600	36	200	250	600	946-108X600
20	100	125	100	946-105X100	36	250	315	200	946-109X200
20	100	125	150	946-105X150	36	250	315	315	946-109X315
20	100	125	200	946-105X200	36	250	315	600	946-109X600

Serie 947

T - Profil Aluminium

Aluminium T - Section



Material:
Hochfeste LM-Legierung F51
ALZnMgCu 1,5 Mat.-Nr. 3.4365
Zugfestigkeit 510 N/mm²
Planparallelität <0,02/100mm
Winkligkeit $< \pm 1^\circ$

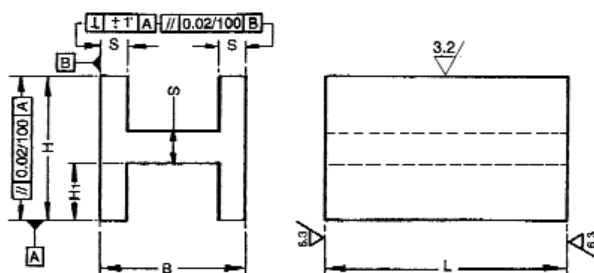
Material:
Aluminium high tensile F51
ALZnMgCu 1,5 Mat.-Nr. 3.4365
tensile strength 510 N/mm²
Parallelism <0,02/100 mm
Squareness $< \pm 1$

S	B	H	A	L	Bestell-Nr./Order-No.	S	B	H	A	L	Bestell-Nr./Order-No.
10	40	40	15	150	947-101X150	20	125	125	52,5	150	947-105X150
10	40	40	15	315	947-101X315	20	125	125	52,5	200	947-105X200
12	63	63	25,5	150	947-102X150	20	125	125	52,5	315	947-105X315
12	63	63	25,5	315	947-102X315	20	125	125	52,5	600	947-105X600
16	80	80	32	150	947-103X150	25	160	160	67,5	150	947-106X150
16	80	80	32	200	947-103X200	25	160	160	67,5	200	947-106X200
16	80	80	32	315	947-103X315	25	160	160	67,5	315	947-106X315
16	80	80	32	600	947-103X600	25	160	160	67,5	600	947-106X600
20	100	100	40	150	947-104X150	32	200	200	84	200	947-107X200
20	100	100	40	200	947-104X200	32	200	200	84	315	947-107X315
20	100	100	40	315	947-104X315	32	200	200	84	600	947-107X600
20	100	100	40	600	947-104X600						

Serie 948

H - Profil Aluminium

Aluminium H - Section



Material:
Hochfeste LM-Legierung F51
ALZnMgCu 1,5 Mat.-Nr. 3.4365
Zugfestigkeit 510 N/mm²
Planparallelität <0,02/100mm
Winkligkeit $\pm 1^\circ$

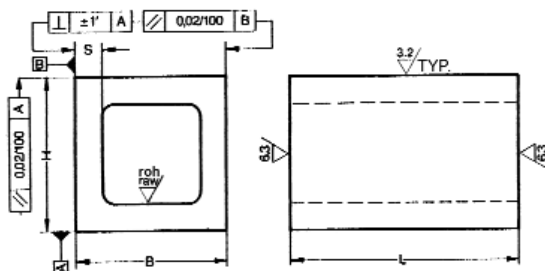
Material:
Aluminium high tensile F51
ALZnMgCu 1,5 Mat.-Nr. 3.4365
tensile strength 510 N/mm²
Parallelism <0,02/100 mm
Squareness $< \pm 1$

B	H	H1	S	S1	R	L	Bestell-Nr./Order-No.
40	40	12	10	12	4	150	948-101x150
40	40	12	10	12	4	300	948-101x300
63	63	18	12	16	4	150	948-102x150
63	63	18	12	16	4	300	948-102x300
80	80	25	16	21	6	200	948-103x200
80	80	25	16	21	6	300	948-103x300
80	80	25	16	21	6	600	948-103x600
100	100	32	20	26	8	200	984-104x200
100	100	32	20	26	8	300	984-104x300
100	100	32	20	26	8	600	984-104x600
125	125	45	20	26	8	200	948-105x200
125	125	45	20	26	8	300	948-105x300
125	125	45	20	26	8	600	948-105x600

Serie 949

Hohlkörper Aluminium

Aluminium Hollow Block



Material:
Hochfeste LM-Legierung F51
ALZnMgCu 1,5 Mat.-Nr. 3.4365
Zugfestigkeit 510 N/mm²
Planparallelität <0,02/100mm
Winkligkeit $\pm 1^\circ$

Material:
Aluminium high tensile F51
ALZnMgCu 1,5 Mat.-Nr. 3.4365
tensile strength 510 N/mm²
Parallelism <0,02/100 mm
Squareness $< \pm 1$

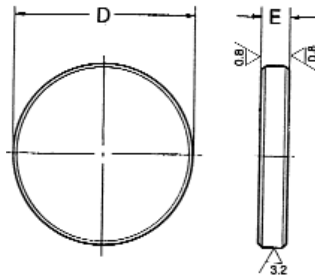
B	H	S	L	Bestell-Nr./Order-No.
125	75	10	100	949-101x100
125	75	10	150	949-101x150
125	75	10	200	949-101x200
125	75	10	315	949-101x315
125	75	10	600	949-101x600
150	100	23	100	949-102x100
150	100	23	150	949-102x150
150	100	23	200	949-102x200
150	100	23	315	949-102x315
150	100	23	600	949-102x600

GENOMA

Serie 950

Scheibe Aluminium

Aluminium Circular Plate



Material:
Hochfeste LM-Legierung F51
ALZnMgCu 1,5 Mat.-Nr. 3.4365
Zugfestigkeit 510 N/mm²
Planparallelität <0,02/100mm
Winkligkeit < ± 1'

Material:
Aluminium high tensile F51
ALZnMgCu 1,5 Mat.-Nr. 3.4365
tensile strength 510 N/mm²
Parallelism <0,02/100 mm
Squareness < ± 1

D	E
63	14
80	20
100	20
125	25
160	32
200	32
250	36
315	40
400	45
500	50

Bestell-Nr./Order-No.
950-101
950-102
950-103
950-104
950-105
950-106
950-107
950-108
950-109
950-110